



SPLICE STORY

THE STANDARD AT COLUMBIA

Project Timeframe: June 2023

Contract Value: \$56,000

Project Summary

The Standard at Columbia is a premier off-campus housing community at the University of South Carolina, designed to cater to the student lifestyle.

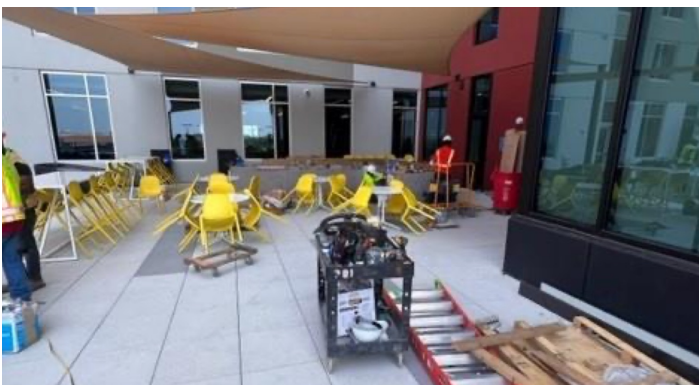
Splice was engaged to receive, deliver, and install all ancillary furniture for interior spaces, as well as the pool deck, entertainment areas, and facility management offices.

These amenities are a key differentiator in how The Standard markets itself to the student community, and by gracefully accommodating all delays and meeting the install target, Splice helped bring this vision to fruition.



Project Highlights

- Splice managed an install punch list that included resolving issues in manufacturing, shipping, and even on-site issues like paint on product.
- Our ability to expertly handle a wide range of specialized tasks helped keep the project on track. For example, when the dealer was unable to locate a billiards specialist in time, Splice stepped in to handle installation of the pool table felt.
- Despite multiple construction delays with partners and subcontractors, Splice helped ensure the project was completed one day under the allotted timeframe.



Splice is a full-service firm providing relocation management, interior design, space planning, furniture and equipment planning and procurement, facilities management, owner representation, and construction management. Any project can be disruptive, time consuming and stressful. Splice addresses these issues by developing a plan that accommodates the unique issues and constraints of a project of any size.