



## SPLICE STORY

# CONFIDENTIAL TECHNOLOGY COMPANY SCIF

<b>Start Date:</b>	1H 2023
<b>End Date:</b>	June 2023
<b>Contract Value:</b>	~\$60,000

### Project Summary

The client is a privately held global technology service provider with over 30 years experience servicing the world's largest and most innovative organizations. Splice worked with their in-house Real Estate/Facilities team on a secure **SCIF (sensitive compartmented information facility) build-out and install**.

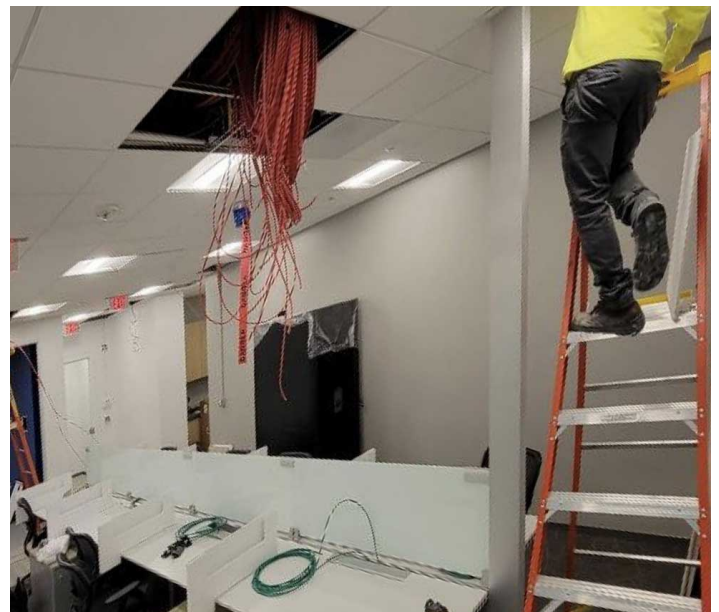
Furniture assets were a combination of used items pulled from storage and new items shipped from the dealer. On the receiving end, Splice carefully reviewed and documented the condition of all items and reported any issues back to the client and dealer.

A furniture permit was needed, so Splice coordinated with the General Contractor on managing all jurisdictional variances and permitting requirements

Splice completed the project on-time—responding quickly to minimize the impact of construction delays—and within budget.

### Project Highlights

- Zero punch.
- Managed all issues with client's used product requiring repair or replacement.
- Coordinated furniture permit requirements with the GC/architect.
- Added wire mold for cable management and looping separately from the trough.



Splice is a full-service firm providing relocation management, interior design, space planning, furniture and equipment planning and procurement, facilities management, owner representation, and construction management. Any project can be disruptive, time consuming and stressful. Splice addresses these issues by developing a plan that accommodates the unique issues and constraints of a project of any size.